



# CLOCKTOWER PLACE

---

## APARTMENTS



### Explore The Lifestyle...

#### Comforts of Home

- Central A/C
- Walk-in Closets
- Sun Porches\*
- Spacious Layouts up to 1,725 Sq. Ft.
- Economic Gas Heat
- River or Cityscape Views

\* in select units

#### Conveniences of Living

- Steps to Downtown Shopping and Dining
- In close proximity to Mines Falls Park
- On-Site Health Club\*
- Assigned Covered Parking\*
- Concierge Services
- Maintenance Services
- Ample Closet Space/Storage Units Available

\*nominal fee

# CLOCKTOWER PLACE

---

## APARTMENTS

Two Clocktower Place | Nashua, NH 03060

**p:** 603.880.3961 | **f:** 603.880.4830

**Email:** [info@clocktowerplacenh.com](mailto:info@clocktowerplacenh.com)

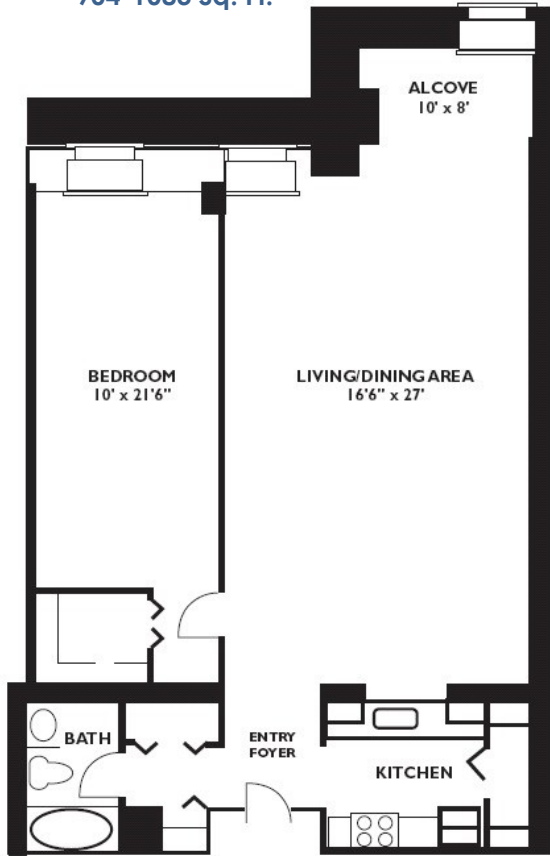
# CLOCKTOWER PLACE

## APARTMENTS

# FLOOR PLANS

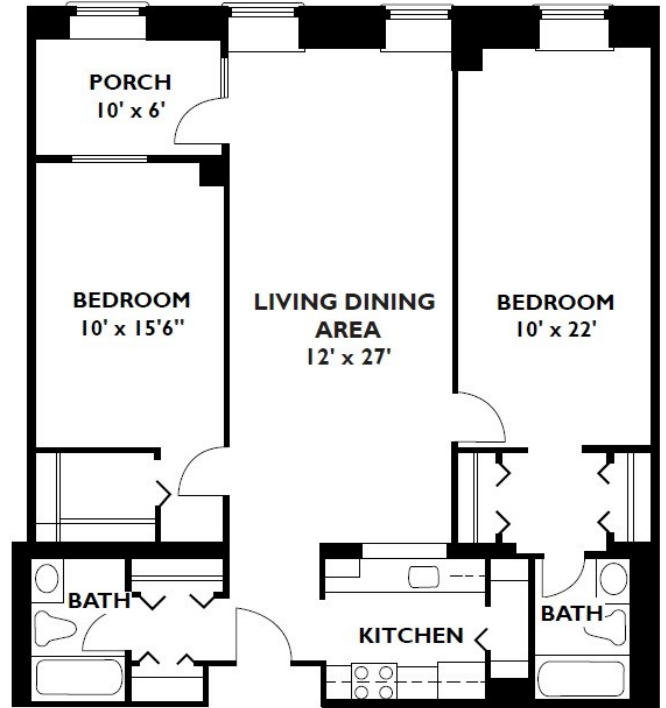
Mill #2, One Bedroom

904-1083 Sq. Ft.



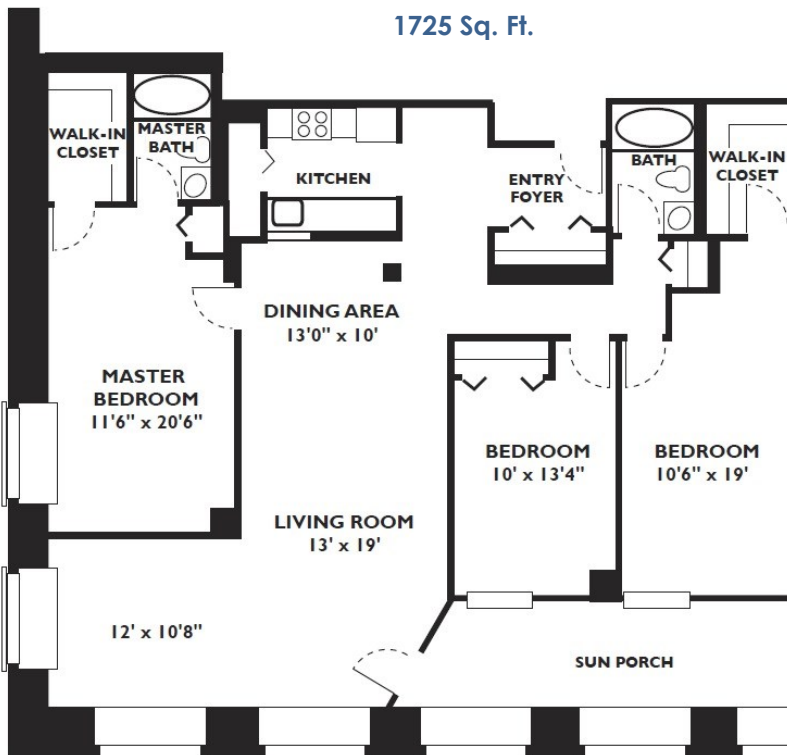
Mill #2, Two Bedroom Riverside

1176 Sq. Ft.



Mill #7, Three Bedroom

1725 Sq. Ft.



Mill #7, Two Bedroom Cityside

1397 Sq. Ft.

