



Tall and stately, the clocktower at the east end of the building sends a proud message to all: for everyone in the city, a landmark; for you, a welcoming symbol of home.

Signature Features

- ❖ Spacious 1,2 and 3 bedroom apartments with truly unique floor plans; many with sun porches
- ❖ Huge, historically authentic mill windows flood apartments with light and air
- ❖ Extensive multi-level fitness center offers indoor pool, cardio and weight equipment, whirlpool, sauna, locker room and more
- ❖ Health club lounge with HDTV and kitchenette, available for private functions
- ❖ Garage parking available
- ❖ Steps away from downtown restaurants and shops
- ❖ Minutes from popular Nashua and Pheasant Lane Malls

Additional Details

- ❖ Fully applianced kitchens, most with separate pantry
- ❖ Individual heat and air conditioning controls
- ❖ Cable and high speed internet access available
- ❖ Select floor plans with storage lofts
- ❖ Additional storage space available

For Your Convenience

- ❖ Professional on-site management and 24 hour maintenance
- ❖ Dry cleaning and laundry service available
- ❖ Laundry facilities conveniently located on each floor
- ❖ Elevators for easy access



Directions to Clocktower Place

Take Route 128 or 495 to Route 3 North. Follow Route 3 over the New Hampshire border to exit 5E. After leaving exit ramp, continue for 1.5 miles. Turn left on Main Street. Go 6 blocks and turn left on Water Street. At the top of the Water Street ramp, turn right. Immediately at right is Clocktower Place.

Clocktower
P L A C E

Two Clocktower Place
Nashua, NH 03061
603.880.3961

Professional managed by SC Management Corp.

Clocktower
P L A C E

Clocktower

PLACE

— the place in Nashua for all the interesting lives you live.

At a bend in the Nashua River sits a grand historic building, once a bustling textile mill, now full of new life as Nashua's finest apartment complex.



Clocktower Place has been included in the National Register of Historic Places. With all the dignity of its proud past carefully preserved, Clocktower Place now offers spectacular apartments in the most convenient location in Nashua.

Unique floor plan layouts and truly large size characterize these apartments. Every aspect has been designed to make your days a little more luxurious, a little more convenient. From the full range of major appliances to the satisfying leisure activities available right here, life at Clocktower Place is comfortable; stimulating and relaxing at the same time.

All apartments have either a sun-filled southern exposure or a delightful river view.

In addition to being the most beautiful and distinctive apartments in the area, Clocktower Place offers a state-of-the-art full service health club and all under one grand roof, in the heart of historical downtown Nashua.

Clocktower Place is the perfect mid-point between work and play. From here, weekends of skiing or hiking are just a short drive away. Days at the beach or at the lake are just as easily accessible. A very short walk brings you to all the shops and offices of downtown Nashua. And an easy drive keeps you in touch with the business and cultural opportunities in Boston.

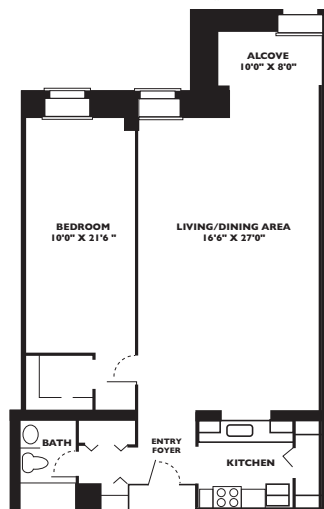


Nashua—

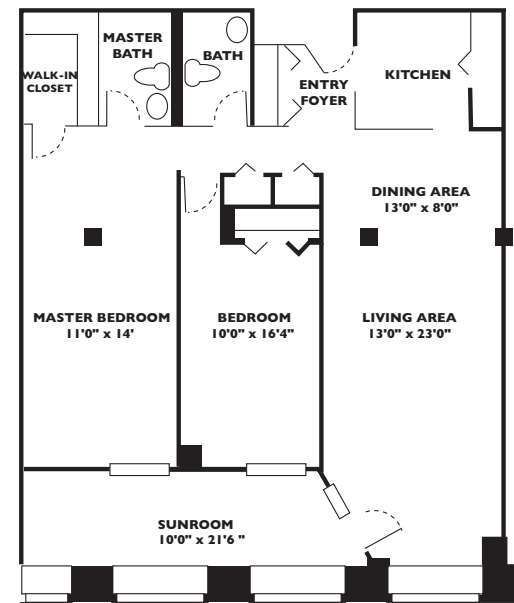
- ❖ Twice named the number one residential community in America by Money Magazine
- ❖ A burgeoning city with a unique downtown offering shopping, food and entertainment
- ❖ The perfect mid-point between ocean beaches, and mountain trails – and close to New Hampshire's lakes for fishing, swimming and boating fun
- ❖ An easy commute to the business communities along 495 and 128 – and just 45 minutes to Boston
- ❖ A dynamic city with lots of traditional New England character and values
- ❖ An affordable place to live...with the cost-of-living index kept low by the lack of state taxes and lower automobile insurance rates.

Example floor plans of 1, 2, and 3 bedroom units.

One Bedroom, One Bath
725-875 sq.ft.



Two Bedroom, Two Bath
1050-1400 sq.ft.



Three Bedroom, Two Bath
1275-1725 sq.ft.

